

BirDog Log Reader 1.2 User Guide

Issue No: xxxx/1.2

www.birdog.tv

Perfect 10 Satellite Distributing
 3901 Progress Street
 North Little Rock, Arkansas 72114

1-800-205-8620

Contents

Thank you for choosing to download the BirDog Log Reader 1.2 software. This user guide will enable you to get the most from the features of this program. This software is compatible with the BirDog USB Plus only.

File:	Page 1
ComPort:	Page 1
Read:	Page 3
Export CSV:	Page 4
About:	Page 4
Version:	Page 5
Erasing data:	Page 5
Error indicators:	Page 5

Overview

The BirDog Log Reader will enable you to download your stored log results on your BirDog USB Plus satellite meter to your PC in a CSV (Comma Separated Values) file format which can be easily read by applications such as Microsoft Excel, Word and other office software packages.

The Log Reader program: Overview

To start the Log Reader program double click the BirDog Log Reader USB icon (this will look like a target) a small program will appear as illustrated.



Lets examine the function of the drop-down menus in turn so that you can familiarise yourself with the Log Reader program functions.

File: Overview



From the file drop-down menu you will be able to erase the current log data in the meter.

Note: The erase function will not reset the log counter within the HDSM USB Plus meter this is so that sequential reference numbers are maintained. The HDSM USB Plus can store up to 32000 log entries and will then restart at 00000.

Comport: Overview

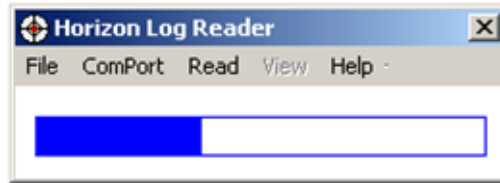


The ComPort option is set as USB only as this program is designed for use with the BirDog USB Plus only.

Tip: If you have not already done so the automatic driver installation needs to be completed before this program can be used.

Overview continued...

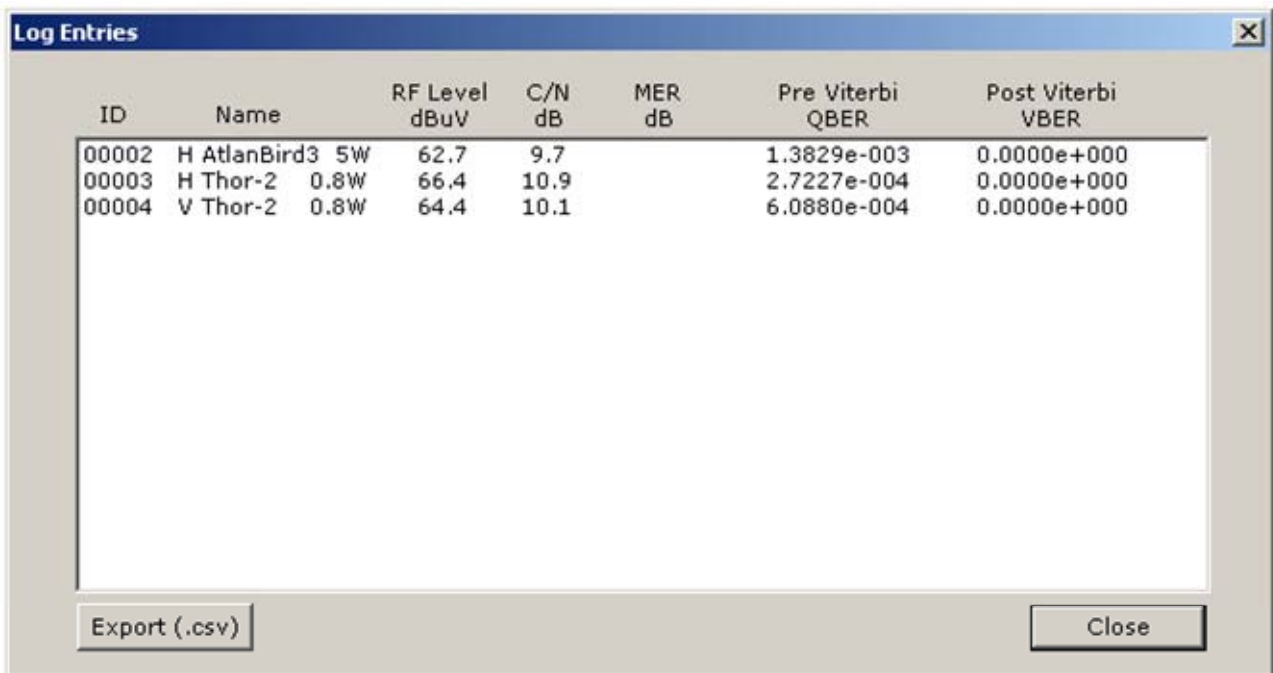
Read: Overview



Once you have connected your BirDog USB Plus to you PC with the supplied USB lead the meter will beep a few times whilst establishing communications and settle with the display showing **Program Mode**. It will now be possible to download the log entries from your meter to your PC by clicking on **Read**. The above screen shot illustrates the download in progress.



Click **OK** and the Log Entries window will appear.



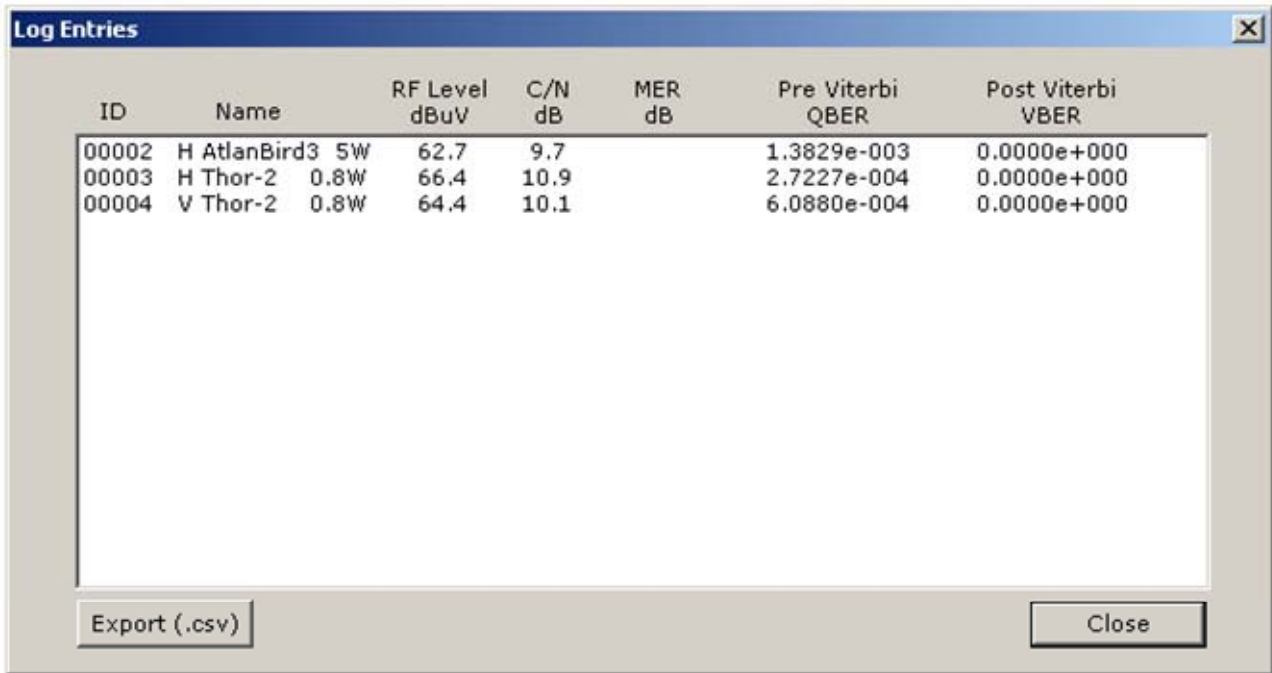
ID	Name	RF Level dBuV	C/N dB	MER dB	Pre Viterbi QBER	Post Viterbi VBER
00002	H AtlanBird3 5W	62.7	9.7		1.3829e-003	0.0000e+000
00003	H Thor-2 0.8W	66.4	10.9		2.7227e-004	0.0000e+000
00004	V Thor-2 0.8W	64.4	10.1		6.0880e-004	0.0000e+000

The screenshot shows the 'Log Entries' window with a table of log data. The table has seven columns: ID, Name, RF Level (dBuV), C/N (dB), MER (dB), Pre Viterbi QBER, and Post Viterbi VBER. There are three rows of data. Below the table are two buttons: 'Export (.csv)' and 'Close'.

In the example above 3 readings were logged on the meter. **Tip:** You can select MER or C/N within the setup menu of the BirDog USB Plus.

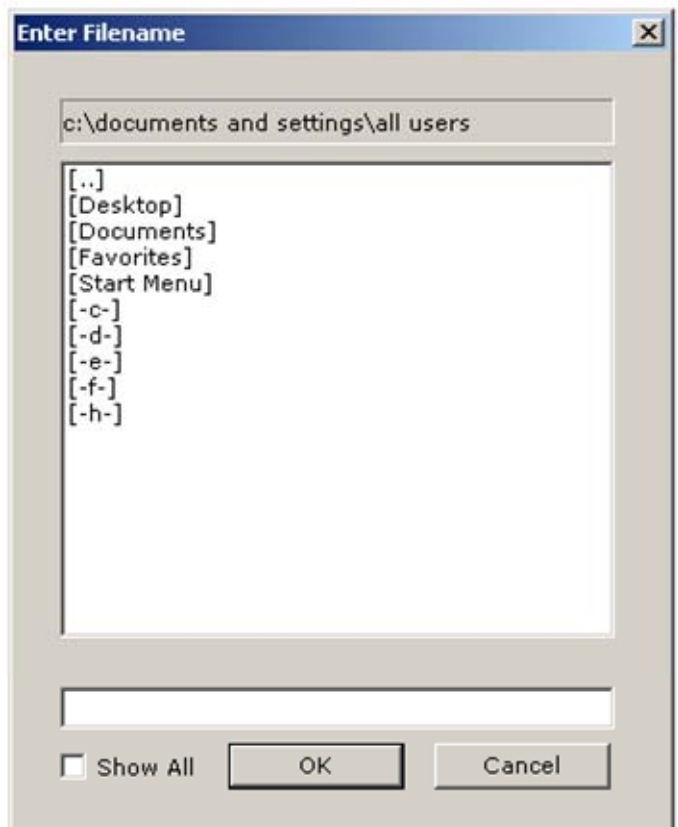
Overview continued...

Export CSV: Overview



On clicking export CSV you can save the log data to a convenient location on your PC.

You can navigate the folders on your PC by double clicking on the directories or using the [..] to go up one level in the directory structure on your PC.



Help / About: Overview



The Help / About drop-down menu function shows the version of logging software.

Overview continued...

Version: Overview



The Version function of the Help drop-down menu will show you the BirDog USB Plus firmware data.

Erasing data:

If you wish to erase the current log data within the BirDog USB Plus select the File drop-down menu and click on **Erase Log**.



Remember: When you erase the meter log data the log counter on the meter will not be reset but the stored values will be cleared.



Error indicators:

The USB Port Error indicates a communication error. Check that your USB lead is correctly connected.

